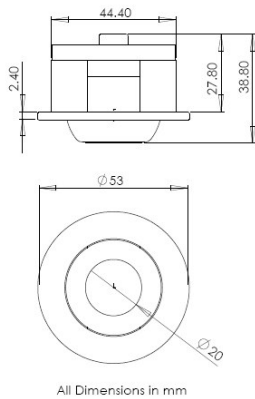


Features & Applications

The PDX-1 Mini DL Eyeball uses High Brightness **CREE LED** as its light source. It is housed in a new modern tiltable fixture for easy installation & application. It comes complete with a Constant Current Driver to ensure consistent brightness and optimal performance. The LED light provides high CRI lighting effect with negligible heat, UV or IR emission. They are ideal for pictures, antiques, jewelries, cosmetics etc. They can be easily applied in showcases, cabinets or under counters.

Dimensions



Product Specifications

| | |
|-------------------------|--|
| Light Source | 1W High Power CREE LED |
| Driver Type | External Constant Current Driver |
| Driver Power Input | 100~240vac, 50~60 Hz |
| Power consumption | Max 1.2 W per lamp |
| Driver Current | 350mA |
| Lumen per Lamp | Min 80 lm (Day Light) |
| Intensity per Lamp @ 1m | 400 lux (Day Light) on 30 Deg Lens |
| Lens Options | Standard: 30 deg, Custom: 60 Deg |
| Colour Options | Standard: Day Light (Typ 6000K), Warm White (Typ 3000K) Custom: Red, Green, Blue, Amber |
| Operating Temperature | -5 ~ 40 deg C |
| Estimated Lamp Life | 50,000 hrs |

Models

PDX-11YZZ

| | | |
|---|---------------------------------------|--|
| ZZ | Digits depict lens angle (deg) | 30, 60. Standard: 30 |
| Y | Digit depicts number of lamps per set | Standard: 3 |
| X | Alphabet depicts LED colour | B: Day Light, E: Warm White, R: Red, G: Green, L: Blue, Y: Amber |
| Standard Models: PDB-11330, PDE-11330. MOQ applies for other models | | |

Prime Light Pte Ltd reserves the right to change the specification without prior notification.